



SIGHIȘOARA

ERDF Regional Operational Program 2007-2013

Priority Axis 2

Improvement of regional and local transport infrastructure



draft

SIGHIȘOARA December 2007

1. New E60 ring road design and construction.

(In Centre Region, the national roads are mostly modernised (94.06%), but only 4.22% of the county and communal roads are modernised.)

Envelop 1.1 Preliminary studies:

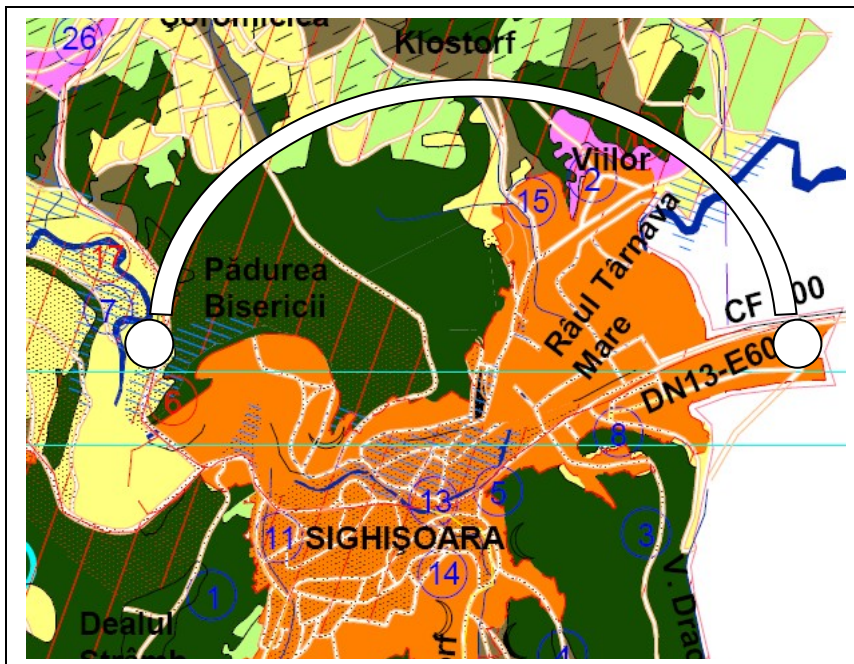
- 1.1.1 Survey on traffic load capacity: actual traffic, future estimations, impact of the future highway and traffic picks
- 1.1.2 Study of environmental impact: natural ecosystems, noise protection, aesthetical integration
- 1.1.3 Geological and topographical surveys
- 1.1.4 Design of the road typology, plan of the route development
- 1.1.5 Design of interconnections with local roads and integration to local traffic

Envelop 1.2 Project design:

- 1.2.1 Basic engineering and architectural project
- 1.2.2 Executive project of earth movement, engineering works, utilities, traffic management and security measures
- 1.2.3 Maintenance project

Envelop 1.3 Works:

- 1.3.1 Time schedule of works and tender documents
- 1.3.2 Call for tenders
- 1.3.3 Construction works
- 1.3.4 Delivery and tests
- 1.3.5 Open of the road



New E60 connecting function

2. Eco friendly and safe rehabilitation of city roads (categories I, II and III)

Envelop 2.1 Missing links, bridges and new crossings of existing city roads

- 2.1.1 Connect blind end roads and complete roads surrounding built blocks
- 2.1.2 Rehabilitate crossings
- 2.1.3 Link roads interrupted by railway, river and other obstacles

Envelop 2.2 Pedestrian areas and walk ways

- 2.2.1 Rehabilitate walk ways along urban roads or distinguished from roads
- 2.2.2 Rehabilitate road surface not used by cars traffic

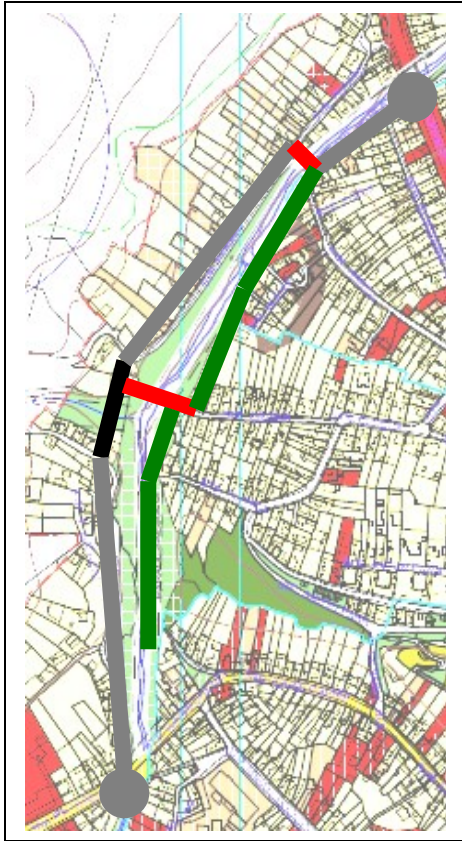
Envelop 2.3 Cycle lanes

Envelop 2.4 The old crossing road E60 rehabilitation

Envelop 2.5 Refurbishment of road surfaces

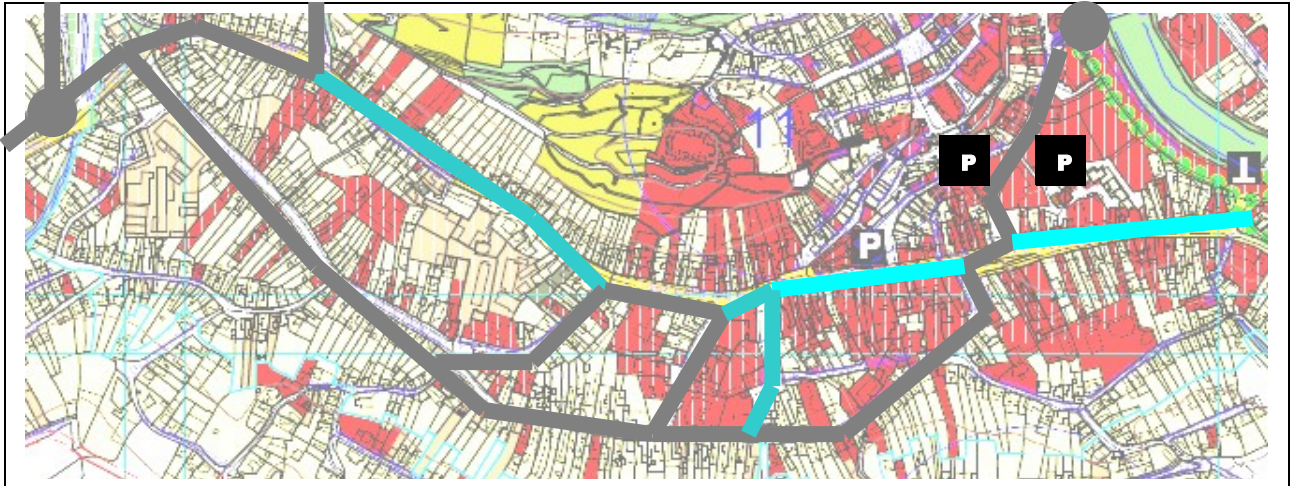
New proposed typologies of refurbished city roads:

1. One or two ways with narrow walk ways and parking
2. One way with large walk ways and parking
3. One or two ways with large walk ways and without parking
4. One or two ways with cycle lanes and walk ways
5. Pedestrian roads with low traffic and parking
6. Pedestrian roads without traffic
7. Green roads with gardens and parking



Paraul Saesului Road system rehabilitation:
 Vasile Lucaciu str. Podeni str. and Horea str.

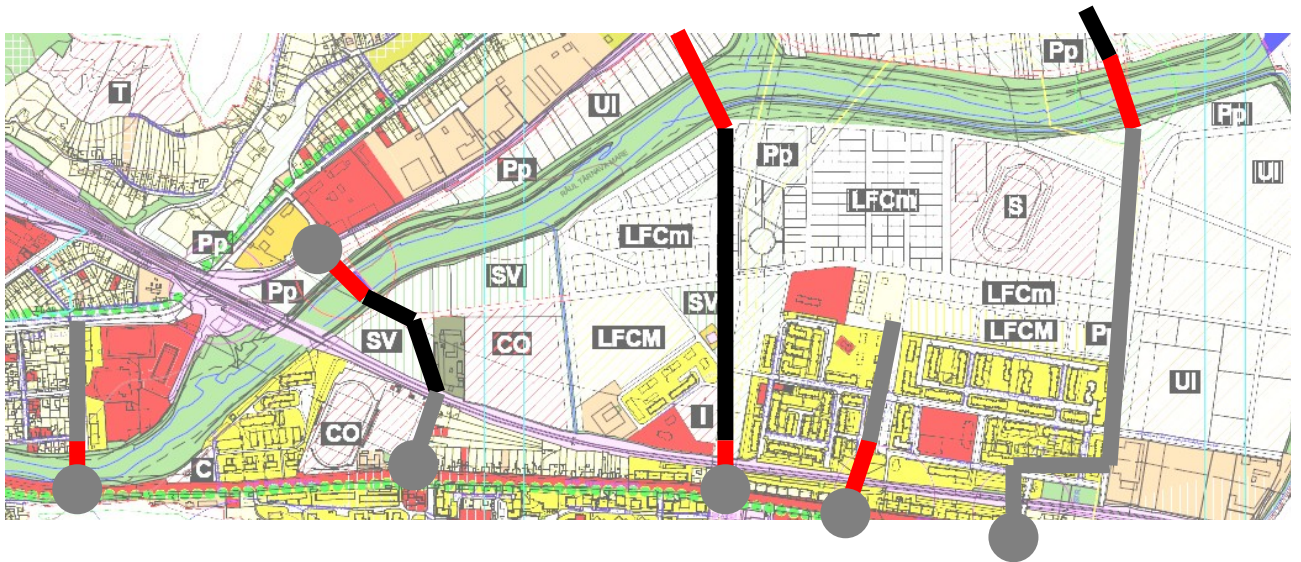
-  Rehabilitated crossing
-  New Road link
-  Rehabilitated road
-  Linking bridge
-  Rehabilitated Pedestrian roads with low traffic
-  Rehabilitated pedestrian roads without traffic
-  New Green road



Downtown Road system rehabilitation:

1 Decembrie 1918 str. - piata H. Hoberth - Ilarie Chendi str. - Morii str. - Grigorescu str. – George Cosbuc str. - Cooperatorii Or str. - Justitiei str. - St.O. Iosif str. - Tache Ionescu str. - Mihai Eminescu str.

-  Rehabilitated crossing
-  New Road link
-  Rehabilitated road
-  Linking bridge
-  Rehabilitated Pedestrian roads with low traffic
-  Rehabilitated pedestrian roads without traffic
-  New Green road



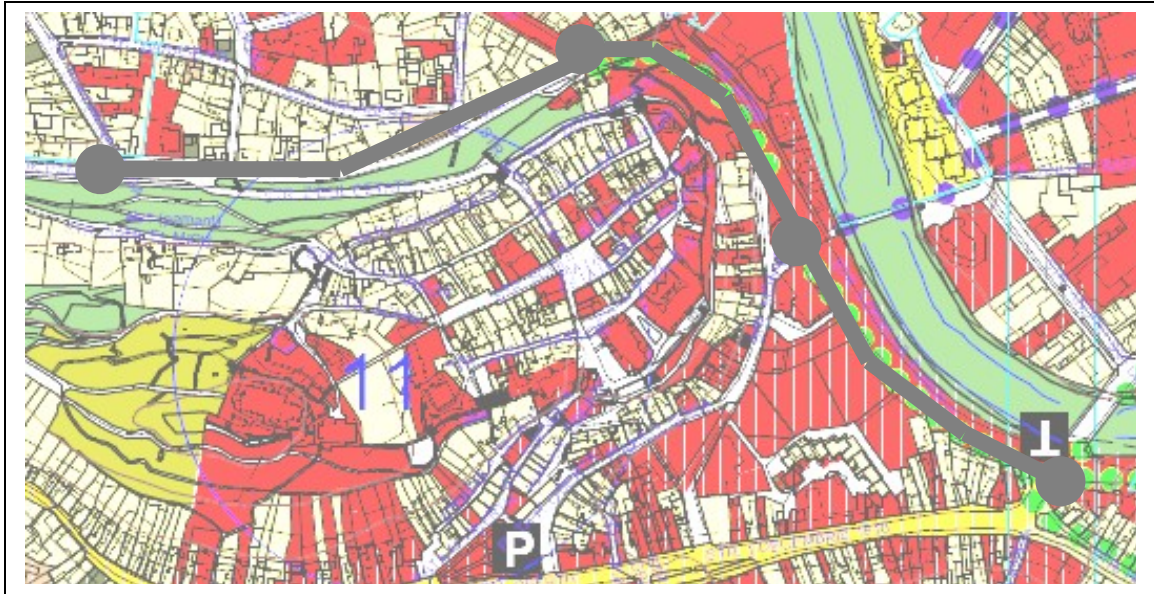
Rehabilitation and connection links for the eastern neighbourhoods roads integration

-  Rehabilitated crossing
-  New Road link
-  Rehabilitated road
-  Linking bridge or passage
-  Rehabilitated Pedestrian roads with low traffic
-  Rehabilitated pedestrian roads without traffic
-  New Green road



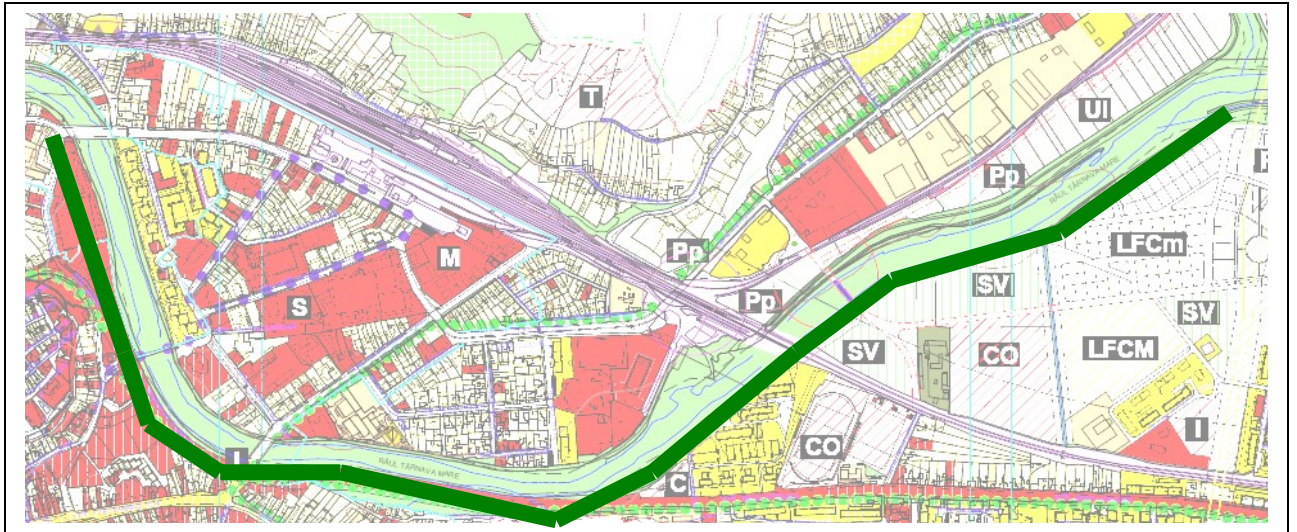
Old E60 rehabilitation in city road

- Rehabilitated crossing
- ▬ New Road link
- ▬ Rehabilitated road
- ▬ Linking bridge or passage
- ▬ Rehabilitated Pedestrian roads with low traffic
- ▬ Rehabilitated pedestrian roads without traffic
- ▬ New Green road



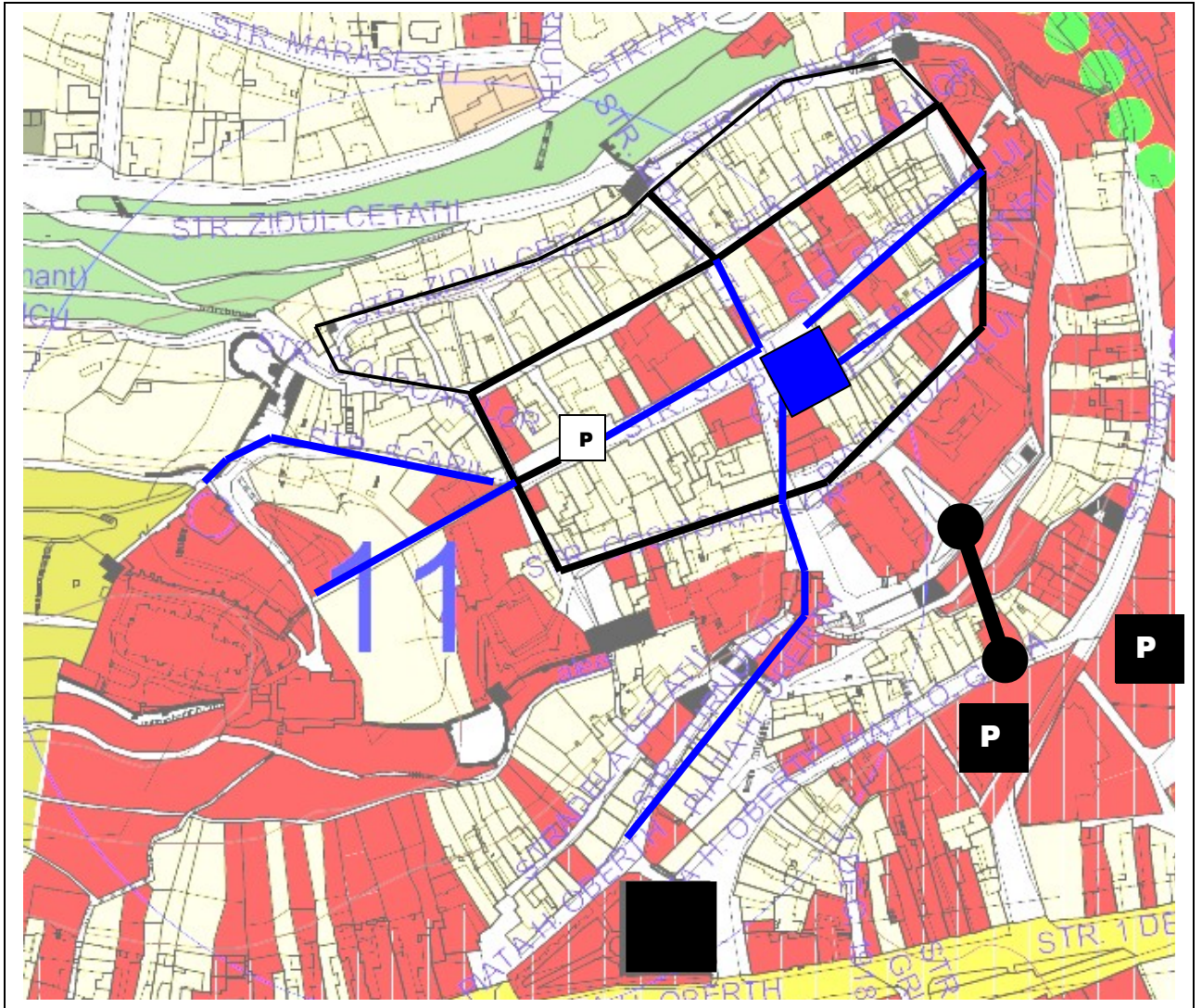
Old E60 and Anton Pann str. rehabilitation in city green avenue

-  Rehabilitated crossing
-  New Road link
-  Rehabilitated road
-  Linking bridge or passage
-  Rehabilitated Pedestrian roads with low traffic
-  Rehabilitated pedestrian roads without traffic
-  New Greenway road



Greenway along Tarnava river

Rehabilitation of existing pathways and passages



Draft alternative accessibility citadel



Underground public parking



Underground mechanic pedestrian connection with citadel



Mixed pedestrian and cars of residents, deliveries and emergency



Mixed pedestrian and cars of residents and emergency



Pedestrian



Pedestrian square

Other topics to be developed (not eligible for ROP)

New city roads with integrated mobility performances

Underground mechanical staircases and elevators for the citadel
Traffic control of the citadel

Parking facilities

Urban public transports
Inter modality pole in the railway station
Connections with regional airports and air companies

Connecting Highway passing at 3 Km W from the City